



Breas Vivo 1

Breas Vivo 2

Breas Vivo 3

Lay Caregiver Quick Reference Guide

Doc. 010094 En rev N-1
2025-02-11

Customer Support

855-436-8724
Monday through Friday, 8am to 5pm EST

Symbols on the Display

SYMBOL	DESCRIPTION
	SD card inserted and working
	Nurse call connected
	Remote alarm connected
	SpO ₂ connected
	Humidifier activated
	Heated circuit activated
	"Clock radio wake up" activated
	All alarms shut off
	Powered by mains
	Powered by external DC
	Internal battery status (Vivo 3 only)

Quick Reference Guide

This is not a complete guide for the Vivo 1/2/3. See your manual for comprehensive information.

Outdoor Use

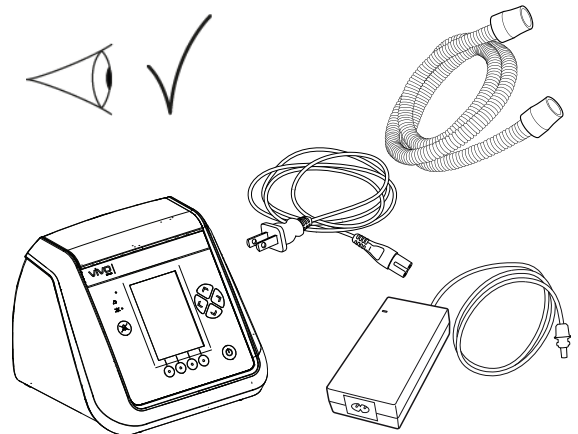
Do not expose the device to rain or snowfall. The device is rated IP22. This means that it withstands dripping water when not tilted more than 15 degrees from vertical.

Safety Precautions

- If suspecting damage or malfunction, take the device out of service and contact customer support. The device must not be opened, repaired or modified by unauthorized personnel.
- Arrange the patient circuit and cables to connected accessories in a way that prevents them from entangling and strangulating the patient.
- The device is not designed for life support treatment.
- The device shall not be operated without adequate training.

Inspections Before Use

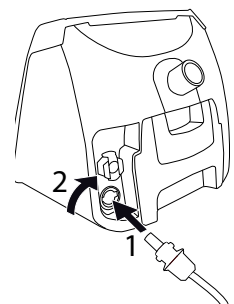
Inspect the power cord and ventilator for damage before use. Do not operate the device if it has a damaged power cord, power supply or casing.



Connect the Power Cord

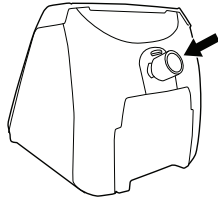
Use the original power supply unit only. Inspect the power supply including the cords for damages. Do not use if damaged.


1. Insert the power cord.
 2. Turn it clockwise to lock it to the device.
- The device starts in standby mode when the power is connected.



Connect the Patient Circuit

1. Inspect the patient circuit for cracks or other damages. Do not use if damaged.
2. Connect the patient circuit to the patient air outlet on the ventilator.



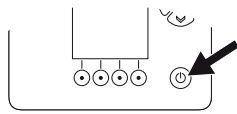
 If the device is to be used by multiple patients, a bacterial filter shall be used between the air outlet and the patient circuit.

3. Connect the other end of the patient circuit to a leakage port or to a patient interface with integrated leakage port.

Start/Stop Treatment

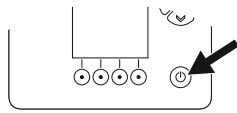
With Confirm Start/Stop Off

1. Press the On/Off button to start and stop the treatment.



With Confirm Start/Stop On

1. To start treatment, press and hold the On/Off button.



2. Release the On/Off button when the progress bar is filled.

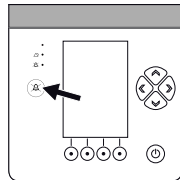


1. To stop treatment, first press and hold the On/Off button.

2. Release the On/Off button when the progress bar is filled.

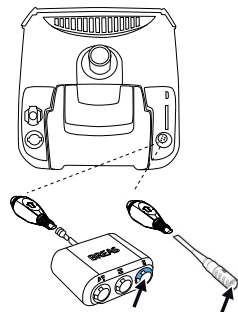


3. Confirm by pressing the Mute Alarm button.



Connect the SpO₂ module (Accessory)

1. Connect either of the SpO₂ adapter cable or the accessory box to the communication port.
2. Connect the SpO₂ module to the blue SpO₂ port of the accessory box/adapter cable.
3. Connect the sensor to the SpO₂ module.

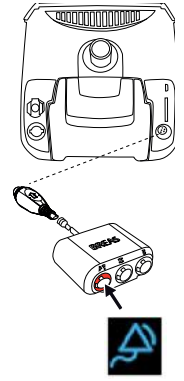


4. When starting the device, check that the SpO₂ connected symbol is lit.



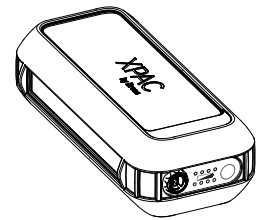
Connect the Remote Alarm (Accessories)

1. Connect the accessory box to the communication port.
2. Connect the remote alarm to the red remote alarm port of the accessory box.
3. When starting the device, check that the Remote alarm symbol is lit.

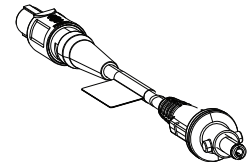


Connect the XPAC (Accessory)

The XPAC is an external DC source for the device. It contains one or two lithium-ion battery packs, with an expected battery life of 18 hours per battery pack (max. 36 hours).



For connecting the XPAC to the device, you also need the battery cable 007803



1. Connect the cable to the XPAC and to the device.
2. Turn on the device and check that it is powered by external DC.



Cleaning Precautions



- Do not soak the device or use excessive water or other fluids during cleaning.
- Liquid shall not be poured onto the device.
- Do not autoclave the device. Clean as instructed by Breas Medical only.
- Do not open the device's casing.

These instructions do not include cleaning of the patient circuit. The patient circuit should be cleaned and replaced in accordance with the manufacturer's instructions, or by the care provider's instructions if additional cleaning or other replacement intervals are prescribed.

Clean the Main Unit

Cleaning Equipment:

- A lint free cloth
 - A mild soap solution,
 - Ethanol 70% (for disinfection)
1. Turn off the device and disconnect the power supply.
 2. Remove the patient circuit. If a bacteria filter or any cable connected accessories are used, remove them as well.
 3. Clean the external using a lint free cloth, moistened with a mild soap solution or ethanol 70% .
 4. Accessories shall be cleaned in accordance with their respective user instructions.
 5. Allow all cleaned parts to air dry.
 6. Visually inspect the ventilator and accessories that have been cleaned. If the ventilator or any of the accessories are not visually clean and dry, repeat the associated cleaning steps or safely dispose of the item.
 7. After cleaning, reconnect the patient circuit and any accessories that was disconnected..

Replace the Patient Air Inlet Filters

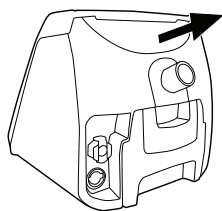
The patient air inlet filters are located inside a magnetic filter holder at the back of the ventilator.

Washable Filter (grey):

Replace at least once a year, wash at least once a week.

Disposable Filter (white):

Replace at least every four weeks, or more often in high pollution or pollen-rich environments.



Using the Attachable Humidifier (Accessory)

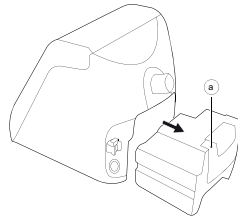
The humidifier is intended to humidify the patient air. It is intended for non-invasive use only.



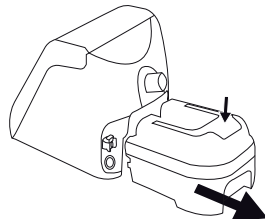
- The humidifier water chamber is for single patient use only.
- The humidifier is intended for stationary use and requires a connection to the Mains power supply to work. During mobile use, remove the humidifier water chamber and insert the air bypass unit to the device.

Attach and Detach the Humidifier to the Device

1. If the device has the air bypass unit installed, push down the locking latch and pull the bypass unit out.



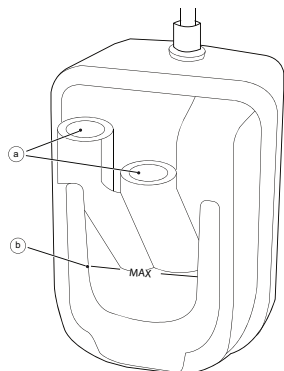
2. If the water chamber is installed, push down the locking latch and pull it out.



3. Attach the water chamber (or the air bypass unit) by inserting them to the device. Make sure that the locking latch is engaged.

Filling Water to the Humidifier

1. Detach the water chamber, see above.
2. Inspect for damages, dirt or deposits.
3. Make sure the water meets the quality requirements. It shall be either:
 - Distilled
 - Sterilized
 - Boiled and chilled tap water.
4. Hold the humidifier with the air path openings (a) up and fill water into either of the air path openings. Make sure not to overfill (b).
5. If the outside of the humidifier is wet, dry it with a lint free cloth before inserting it to the device.

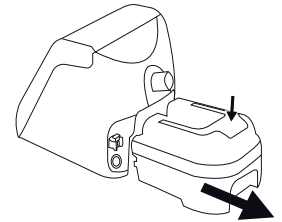


Clean the Humidifier Water Chamber (Accessory)

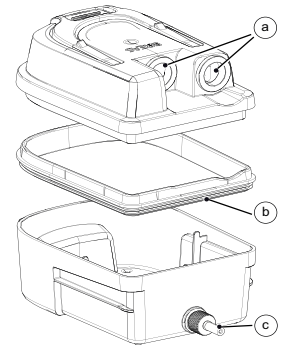


After using the ventilator, wait one minute before you open the water chamber since it may be hot.

1. Push down the locking latch and then pull the humidifier out.



2. Open the water chamber by pulling the lid up.
 - Detach the silicone gasket (b)
 - Don't detach the silicone airpaths (a) or the cartridge heater (c).



3. Wash the water chamber by hand with mild soap and warm water, or in a dishwasher without dishwashing detergent.
4. Allow all cleaned parts to air dry.
5. Visually inspect the cleaned parts. If they are not visually clean and dry, repeat the associated cleaning steps or safely dispose of the water chamber.
6. After cleaning, ensure that the silicone gasket (b) is positioned correctly: When closing the water chamber, the grooved edge must be positioned downwards.
7. Reinsert the water chamber to the device.



Breas Medical AB
Företagsvägen 1
SE-43533 Mölnlycke Sweden
Phone +46 31 86 88 00
Fax +46 31 86 88 10
Find your local distributor at
www.breas.com



Customer Support
855-436-8724